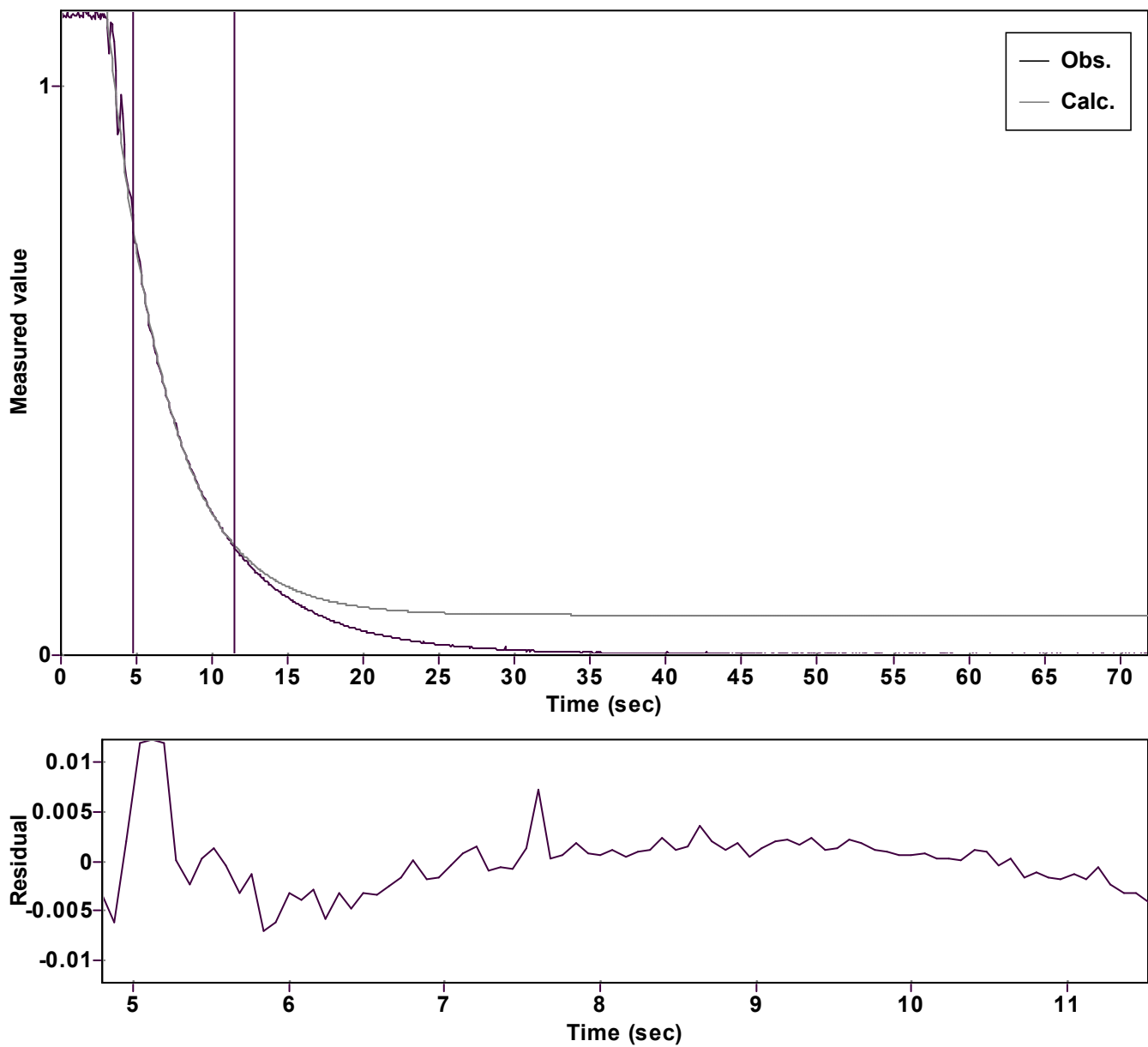


Evaluation of kinetic data with ExpoFit V 1.3

Graph



Function: y = A exp (-kx) + C (Exponential decrease)		Reference point: C (of function)	
Amp A = 2.309537642414121 Â± 0.023441877862122		Quality r ² = 0.9995642150007	
Rate k = 0.256096906254903 Â± 0.002826298232738		Data points = 85 of 899	
Final C = 0.070156409299250 Â± 0.003501405165321		Conversion = 52.3 %	
Start at position: 4.8 / 0.74238 (36.8 %)		End at position: 11.521 / 0.18684 (89.0 %)	
ExpoFit file: vinyl azide_7 equiv_Ar2CH+Nu_c01 (Data-Extract aDate of file: p 28/05/2025 21:48:42			
Source file: vinyl azide_7 equiv_Ar2CH+Nu_c01 (Data-Extract aDate of file: t 28/05/2025 21:16:00			
Type of source file: Universal ASCII - file data			
2007 by Dr. Kempf		Date of print: 15/10/2025 19:33:39	